

Fire Graphics Display System

HEAD OFFICE

Wellington

PO Box 35-063, Naenae
Lower Hutt 5041
17 Eastern Hutt Rd
Wingate
Lower Hutt 5019

Tel (04) 567 - 3229
Fax (04) 567 - 3644

www.pertronic.co.nz

sales@pertronic.co.nz
tech@pertronic.co.nz



ISO 9001: 2008

International Standards
Certifications
QAC/R64/0012

JSE SERVICES S/B

Penang: No. 9,
Lorong Nagasari 2,
Taman Nagasari,
13600 Perai, Penang

Tel 604-397 0378
Fax 604-398 7162

sales@jseservices.info

Kuala Lumpur: 340-1,
Jalan Midah Besar,
Taman Midah,
56000 Kuala Lumpur

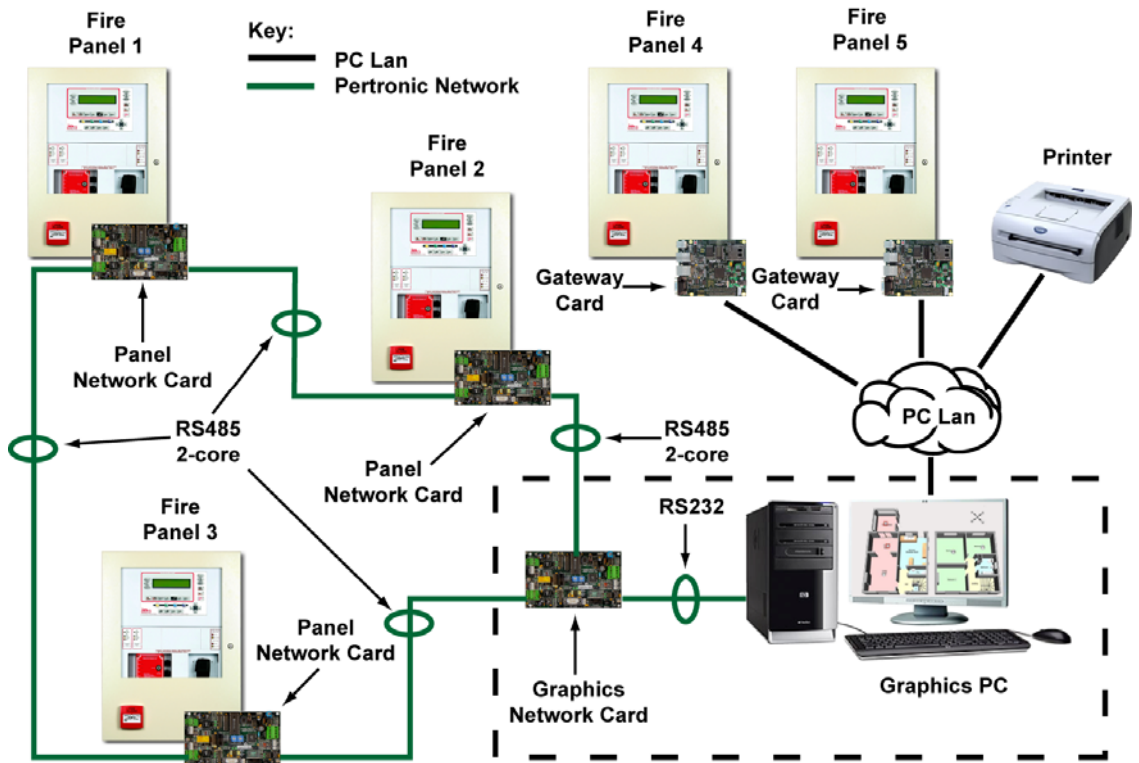
Tel 603-9173 6660/
603-9173 6661/
603-9173 6669
Fax 603-9173 9998

saleskl@jseservices.info

Overview:

The **Pertronic FireMap[®] Graphics Display System** has been designed with 'ease of use' as a paramount objective. Users are assigned security levels and passwords by the system manager to allow access to those features they need.

The system allows navigation via a hierarchical map navigation view, which is always visible. In the event of an Alarm, the relevant map is automatically shown, indicating the position of the device in Alarm, along with the event details






Typical Multi-Panel System Configuration:

Features:

- Accepts single or multiple individual or networked Pertronic panel connections
- Connection via direct RS232 or Ethernet (LAN)
- Gateway Interface option for individual panels (RS232-LAN conversion)
- Commercial RS232-LAN converter option for network interfaces
- Imports F120A and F100A panel configuration text files for device data and location details
- Allows the user to carry out all map editing functions, including placement or movement of devices, using simple 'drag and drop' functionality
- Simple synchronization of panel configuration and graphics database
- Visibility of devices not yet placed onto maps
- Displays precise positioning of individual addressable devices within maps
- Colour coded display of each device's current status
- Utilizes jpg or bmp format files for map creation
- User creation of zone boundaries
- Current view print option at all times
- Overall system status indication by panel
- Configurable 'Home' view page
- Different distinctive sounds for event types
- User 'note' leaving function for other users
- Allows individual device or zone isolation and reset from alarm
- Panel/s can be individually directly controlled and interrogated from the PC
- Multiple user access with security login

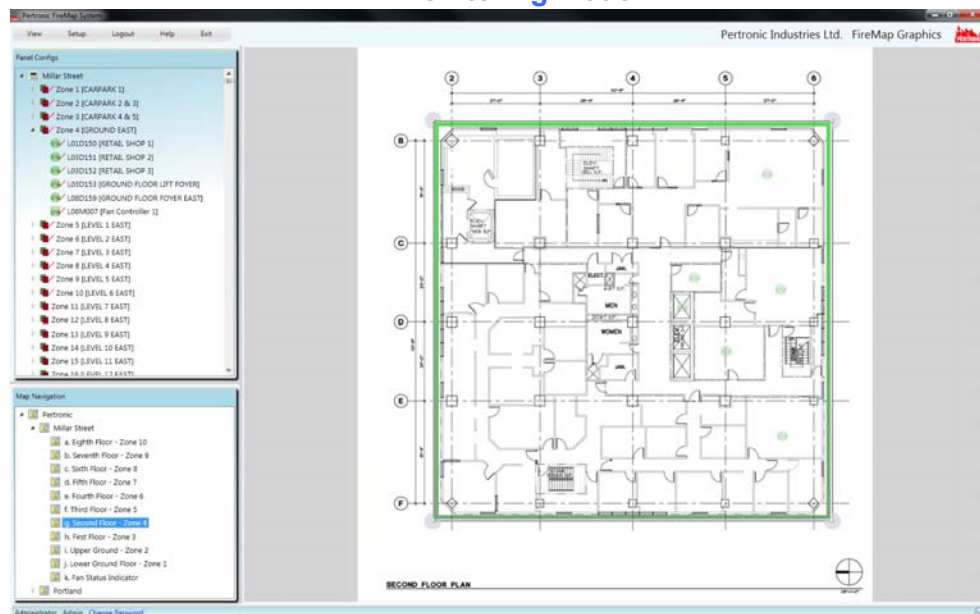
Minimum PC Specifications:

-  3GHz CPU, 2GB RAM, 80GB HDD, 1 x RS232, 2 x USB 2.0, DVD RW
-  Windows 7, 64-bit
-  TFT Screen 20" minimum, 1680 x 1050 (or higher) WSXGA (aspect ratio 1.6:1)

FireMap® Graphics System Screen Examples:



Monitoring Mode



Configuration Mode

Ordering Information:

Part Number	Description
NETCD-NCU	Network Card for Graphic Interface
NETCARD	Network Card - F100A/F120A Panels/LED Mimics
NETGATE	Network Gateway Interface
FIREMAP	FireMap® Graphics Display System software

PERTRONIC INDUSTRIES LTD

Wellington
17 Eastern Hutt Road
Wingate
Lower Hutt 5019
Phone: (64 4) 567 3229
Fax: (64 4) 567 3644
sales@pertronic.co.nz

Auckland
359 Onehunga Mall
Onehunga
Auckland 1061
Phone: (64 9) 633 0226
Fax: (64 9) 633 0228
sales@pertronic.co.nz



JSE SERVICES SDN. BHD.

Kuala Lumpur
340-1 Jalan Midah Besar
Taman Midah
56000 Cheras
Phone: (60 3) 9173 6660 / 1 / 9
Fax: (60 3) 9173 9998
saleskl@jseervices.info

Prai
9 Lorong Nagasari 2
Taman Nagasari
13600 Prai
Phone: (60 4) 397 0378 / 398 3549
Fax: (60 4) 398 7162
sales@jseervices.info